

RINEK WALL

UNIVERSAL APPLICATIONS

BRAND GUIDE



TABLE OF CONTENTS

“WE ENJOY OURSELVES EVERYDAY.
WE REALLY DO LOVE WHAT WE DO.”

- DANA AGAMALIAN
CO-FOUNDER

ABOUT THE BRAND	4
FOUNDERS' BIOS	5
HONORS	6
COLLECTION SAMPLES	9
GRAPHIC APPLICATION EXAMPLES	23
PRESS AND BRAND EXPOSURE	28
CLIENTELE	37
TARGETED LICENSE CATEGORIES	38

RINEKWALL

UNIVERSAL APPLICATIONS

RINEKWALL IS AN AVANT-GARDE COLLECTION OF PHOTOGRAPHIC DESIGNS. RINEKWALL'S COLLECTION, CONSISTING OF MORE THAN 70 DESIGNS, IS SOLD INTERNATIONALLY AND CAN BE TRANSLATED ONTO A MYRIAD OF SUBSTRATES SUCH AS CANVAS, PLASTIC, METAL, MIRROR, WOOD, LAMINATE, ACRYLIC, PAPER, AND PORCELAIN. THE DESIGN TEAM OF DANA AGAMALIAN AND JOHN RINEK PERSONALLY OVERSEES THE CUSTOM DESIGN PROGRAM. THERE IS NO LIMIT TO WHAT RINEKWALL CAN DO FOR A CLIENT OR PROJECT.

RINEKWALL IS SOLD INTERNATIONALLY AND BASED IN COSTA MESA, CALIFORNIA. PRODUCT LICENSING, PRIVATE LABEL, BRANDING, CUSTOM DESIGNS, AND COLLECTIONS ARE AMONG THE DIFFERENT PROGRAMS RINEKWALL HAS TO OFFER A CLIENT OR CORPORATION.



JOHN RINEK

JOHN RINEK IS THE PHOTOGRAPHER FOR AND CREATIVE ENGINEER OF RINEKWALL'S UNPRECEDENTED COLLECTION. PHOTOGRAPHY HAS BEEN HIS PASSION SINCE JOHN BEGAN TO TRAVEL AROUND THE WORLD AT A YOUNG AGE. HE WENT ON TO STUDY PHOTOGRAPHY AND RECEIVED HONORS DISTINCTION IN THE ART STUDIO MAJOR AT THE UNIVERSITY OF CALIFORNIA, SANTA BARBARA. HE CONTINUES TO TRAVEL AND HAS SHOT EDITORIALS FOR SUCH PUBLICATIONS AS ESQUIRE MAGAZINE. JOHN IS BEST KNOWN FOR TAKING HIS PHOTOGRAPHY BEYOND THE NORM. HE HAS HAD MULTIPLE FINE ART EXHIBITIONS RECEIVING RESOUNDING REVIEWS AND HIS PIECES RESIDE IN MANY IMPORTANT COLLECTIONS. TODAY JOHN HAS FOUND HIS NICHE. RINEKWALL BRINGS HIS KEEN ARTISTIC EYE FOR DETAIL TOGETHER WITH YEARS OF TECHNICAL EXPERIENCE.

DANA AGAMALIAN IS THE CREATOR OF RINEKWALL. AS THE DESIGNER OF THE GROUND-BREAKING COLLECTION, SHE DISPLAYS HER LOVE OF COLOR AND ECLECTIC STYLE. SHE STUDIED FINE ARTS AND ART HISTORY AT THE UNIVERSITY OF SOUTHERN CALIFORNIA, AND THEN WENT ON TO STUDY AT THE INSTITUTE OF APPLIED DESIGN. FOR THE LAST THIRTY YEARS DANA HAS FOCUSED ON HER ELEGANT DESIGN INNOVATIONS. CLIENTS AND ORGANIZATIONS FROM AROUND THE WORLD, WITH A KALEIDOSCOPE OF PRODUCTS AND FUNCTIONS, HAVE LAUDED DANA'S WORK. HER RINEKWALL DESIGNS HAVE BEEN PLACED IN THE PERMANENT COLLECTION OF THE SMITHSONIAN COPPER HEWITT DESIGN MUSEUM IN WASHINGTON DC AND HAVE WON THE INTERIOR DESIGN MAGAZINE "BEST OF YEAR" AWARD. DANA'S INTERESTS INCLUDE TRAVELING, COLLECTING ART, AND SAILING. "I AM SURROUNDED BY OVERWHELMING INSPIRATION ALL DAY LONG, REGARDLESS OF WHERE I AM OR WHAT I AM DOING." HER CONCEPT OF RINEKWALL CAPTURES THE ESSENCE OF REALITY WITH ENDLESSLY REPEATING IMAGES AND INFINITE DESIGN POSSIBILITIES.



DANA AGAMALIAN

MAJOR HONORS



RINEKWALL IS PLEASED TO ANNOUNCE THE PROCUREMENT OF TWO DESIGNS INTO THE COOPER-HEWITT NATIONAL DESIGN MUSEUM'S PERMANENT COLLECTION. THE MUSEUM'S COMMITTEE CHOSE BARBED WIRE AND WIRED, CITING THE DESIGNS' FRESH TAKE ON CLASSIC STRIPE PATTERNS AS A DECIDING FACTOR IN THEIR SELECTION. THE TWO DESIGNS WERE THE ONLY ITEMS ACQUIRED DURING THE JUNE, 2012 SELECTION PERIOD.

SMITHSONIAN'S COOPER-HEWITT, NATIONAL DESIGN MUSEUM IS THE ONLY MUSEUM IN THE NATION DEVOTED EXCLUSIVELY TO HISTORIC AND CONTEMPORARY DESIGN. THE MUSEUM PRESENTS COMPELLING PERSPECTIVES ON THE IMPACT OF DESIGN ON DAILY LIFE THROUGH ACTIVE EDUCATIONAL AND CURATORIAL PROGRAMMING.

IT IS THE MISSION OF COOPER-HEWITT'S STAFF AND BOARD OF TRUSTEES TO ADVANCE THE PUBLIC UNDERSTANDING OF DESIGN ACROSS THE TWENTY-FOUR CENTURIES OF HUMAN CREATIVITY REPRESENTED BY THE MUSEUM'S COLLECTION. THE MUSEUM WAS FOUNDED IN 1897 BY AMY, ELEANOR, AND SARAH HEWITT—GRANDDAUGHTERS OF INDUSTRIALIST PETER COOPER—AS PART OF THE COOPER UNION FOR THE ADVANCEMENT OF SCIENCE AND ART. A BRANCH OF THE SMITHSONIAN SINCE 1967, COOPER-HEWITT IS HOUSED IN THE LANDMARK ANDREW CARNEGIE MANSION ON FIFTH AVENUE IN NEW YORK CITY.

THE CAMPUS ALSO INCLUDES TWO HISTORIC TOWNHOUSES RENOVATED WITH STATE-OF-THE-ART CONSERVATION TECHNOLOGY AND A UNIQUE TERRACE AND GARDEN. COOPER-HEWITT'S COLLECTIONS INCLUDE MORE THAN 250,000 DESIGN OBJECTS AND A WORLD-CLASS DESIGN LIBRARY. ITS EXHIBITIONS, IN DEPTH EDUCATIONAL PROGRAMS, AND ON-SITE, DEGREE-GRANTING MASTER'S PROGRAMS EXPLORE THE PROCESS OF DESIGN, BOTH HISTORIC AND CONTEMPORARY. AS PART OF ITS MISSION, COOPER-HEWITT ANNUALLY SPONSORS THE NATIONAL DESIGN AWARDS, A PRESTIGIOUS PROGRAM WHICH HONORS INNOVATION AND EXCELLENCE IN AMERICAN DESIGN. TOGETHER, THESE RESOURCES AND PROGRAMS REINFORCE COOPER-HEWITT'S POSITION AS THE PREEMINENT MUSEUM AND EDUCATIONAL AUTHORITY FOR THE STUDY OF DESIGN IN THE UNITED STATES.



Smithsonian
Cooper-Hewitt, National Design Museum

MAJOR HONORS

RINEKWALL WON THE INTERIOR DESIGN MAGAZINE BEST OF YEAR AWARD IN THE WALLCOVERINGS: CONTRACT CATEGORY. WE ARE HONORED TO HAVE RECEIVED THIS PRESTIGIOUS AWARD. WINNERS WERE ANNOUNCED LIVE DURING A MAGNIFICENT CELEBRATION AT THE IAC BUILDING, NEW YORK CITY.

BEST OF YEAR HONOREES WERE SELECTED BY INTERIOR DESIGNERS AND ARCHITECTS VIA AN ONLINE VOTE AND WINNERS WERE DETERMINED BY A JURY OF LEADING ARCHITECTS AND DESIGNERS.



MAJOR HONORS

RINEKWALL'S SEVILLA COMPASS DESIGN WAS FEATURED ON THE "NO TEARS" EPISODE OF EXTREME MAKEOVER: HOME EDITION. EXTREME MAKEOVER DESIGNERS SPECIFIED RINEKWALL'S SEVILA COMPASS WALLCOVERING FOR THE JOHNSON FAMILY KITCHEN.

THE EMMY AWARD WINNING REALITY PROGRAM "EXTREME MAKEOVER: HOME EDITION," NOW IN ITS 8TH SEASON, IS PRODUCED BY ENDEMOL USA, A DIVISION OF ENDEMOL HOLDING. IT'S EXECUTIVE-PRODUCED BY BRADY CONNELL AND GEORGE VERSCHOOR. DAVID GOLDBERG IS CHAIRMAN, ENDEMOL NORTH AMERICA. THE SHOW AIRS SUNDAYS FROM 8:00-9:00 P.M., ET ON ABC.



CURRENT COLLECTIONS

DESIGNER COLLECTION

THE DESIGNER COLLECTION IS THE EPITOME OF AN ECLECTIC GROUP OF PHOTOGRAPHIC DESIGNS WITH A COMMON THREAD, ALL CREATED BY THE DESIGN TEAM OF DANA AGAMALIAN AND JOHN RINEK. THERE ARE NO RULES OR BOUNDARIES, NO PARTICULAR AUDIENCE TARGETED. AS BOTH DESIGNERS ARE ARTISTS EACH DESIGN IS A PIECE OF ART, PASSIONATELY BORN AND EXECUTED. THE COLLECTION GROWS AND EVOLVES. IT IS DYNAMIC. THE ELEMENTS OF EXCITEMENT AND SURPRISE EXIST. OUR FANS ARE STEADFAST.

WHEN INTERIOR DESIGNER, DANA, TRIED TO SOURCE BARBED WIRE WALLPAPER FOR A PROJECT SHE COULD NOT FIND JUST WHAT SHE ENVISIONED. SHE ASKED JOHN, A PHOTOGRAPHER, IF HE COULD SHOOT, MANIPULATE, AND ENGINEER BARBED WIRE TO CREATE A PHOTOGRAPHIC WALLPAPER DESIGN. IT NEEDED TO SEAMLESSLY MATCH UP AND REPEAT VERTICALLY AND HORIZONTALLY INDEFINITELY, ALL TECHNICAL QUALITIES SHE HAD NOT SEEN BEFORE IN WALLPAPER. THEY WENT TO WORK. BARBED WIRE WAS BORN AND BECAME THE SIGNATURE DESIGN FOR RINEKWALL.

EACH DESIGN IN THE COLLECTION REPRESENTS A MOMENT IN TIME FOR THE ARTIST. PERHAPS SALMON SKIN CAPTURES DANA'S ELEGANT MOOD, AS OPPOSED TO OPTIC SPECTRUM, WHICH REFLECTS

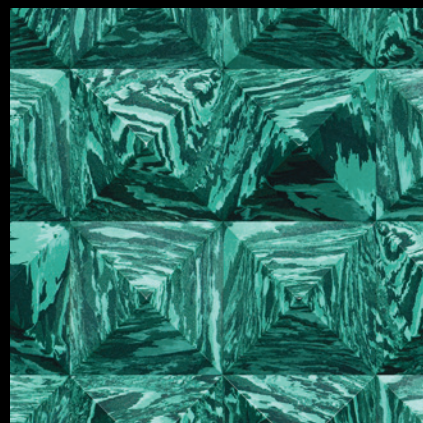
HER WHIMSICAL AND EDGY SIDE. AS ARTISTS, OUR MOODS AND DAILY LIVES INFLUENCE OUR COLLECTION. TRAVEL, ART COLLECTING, FABRICS, ENTERTAINING, ARCHITECTURE, CHILDREN, AND NATURE ARE ALL EVIDENCED THROUGHOUT THE COLLECTION. THE SKY IS THE LIMIT FOR RINEKWALL'S DESIGN CAPABILITIES. THIS TRANSLATES INTO AN AMAZING CUSTOM DESIGN DIVISION. MANY OF THE CUSTOM DESIGNS DANA AND JOHN CREATE WILL NEVER BE PRODUCED FOR ANYONE OTHER THAN THE CLIENT COMMISSIONING THE WORK. THE RINEKWALL EXPERIENCE IS TRULY UNIQUE AND PASSIONATE. THE FUN NEVER STOPS!



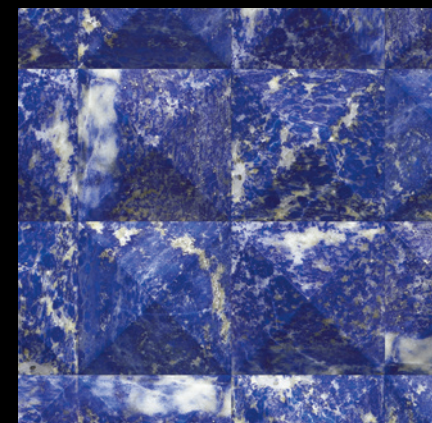
BARBED WIRE - CHROME



BARBED WIRE - COAL



MALACHITE

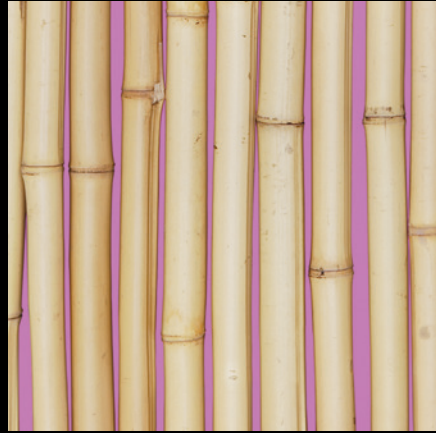


LAPIS

COLLECTIONS



BAMBOO - BLACK



BAMBOO - FUCHSIA



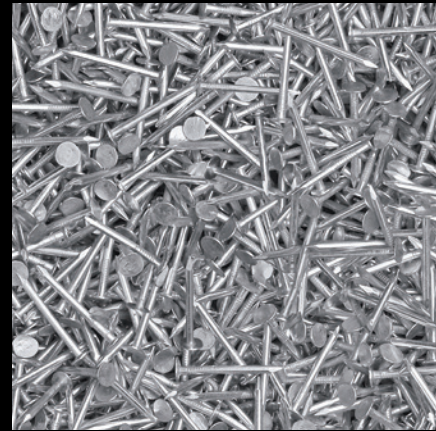
BAMBOO - GROVE



BAMBOO - GREEN



BAMBOO - WHITE



BED OF NAILS



HYBRID

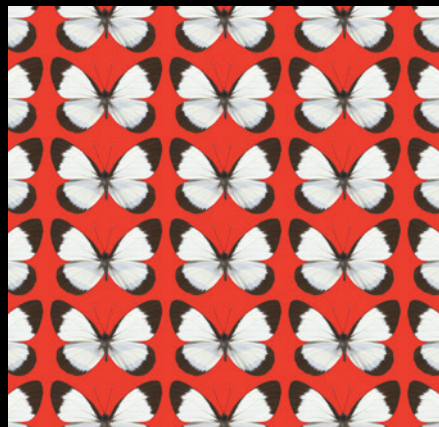


BED OF ROSES

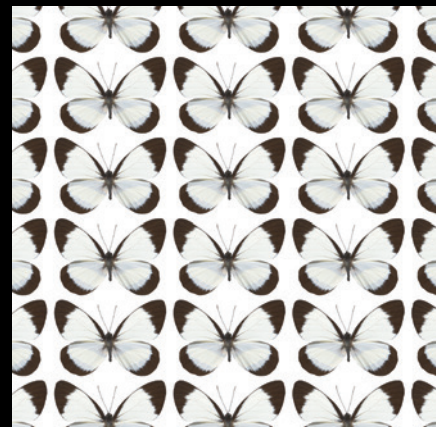
COLLECTIONS



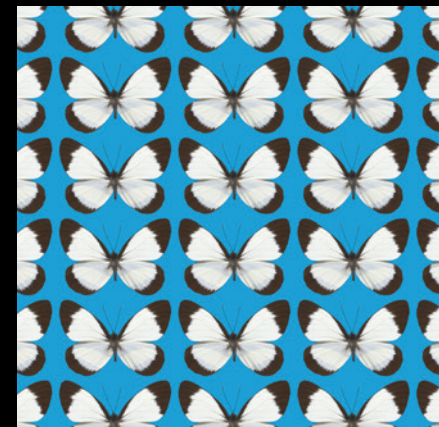
WIRED



MARIPOSA PRECIOSA -
CORAL



MARIPOSA PRECIOSA -
WHITE



MARIPOSA PRECIOSA -
TURQUOISE



MARBLE MIX



RED FEATHER ROSES



LOTUS SPACE



CHAMP DE MARS

COLLECTIONS



MARIPOSAS AMARILLAS



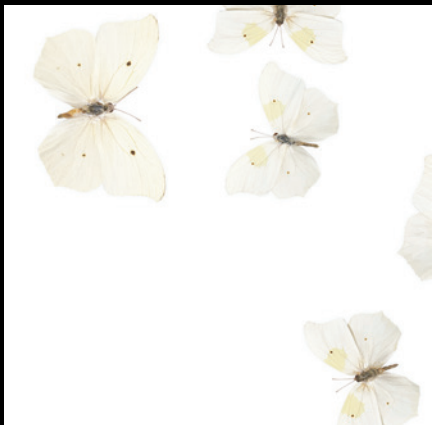
MARIPOSAS AZULES



PEACOCK DREAM



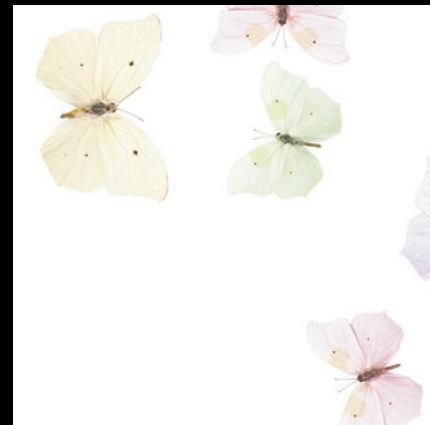
FLAGSTONE



MARIPOSAS LIBRES - WHITE



MARIPOSAS LIBRES - GOLD



MARIPOSAS LIBRES - ALEXA

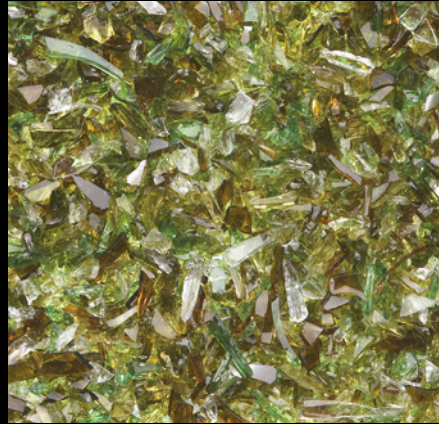


FLASH FLOOD

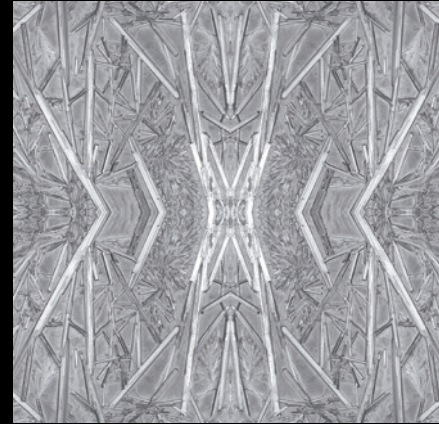
COLLECTIONS



MINI BAR - AMBER



MINI BAR - AGAVE



ICE CRYSTALS - WINTER



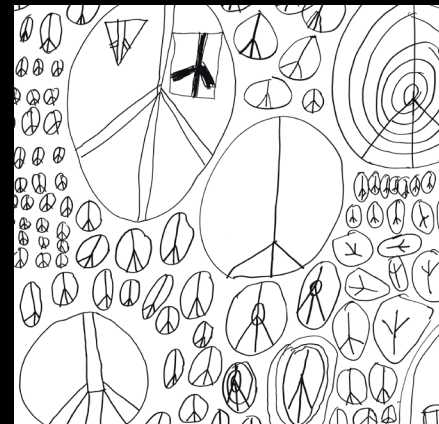
BARREL



PEACE - PURPLE



PEACE - GREEN



PEACE - WHITE

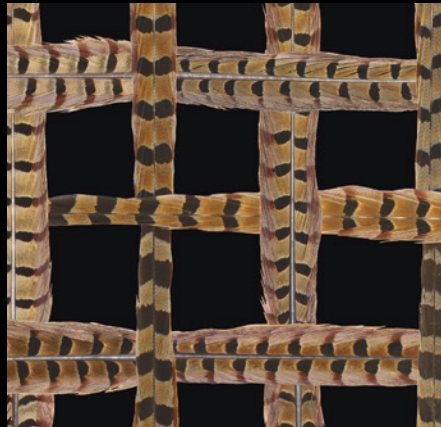


PALM FLOWER

COLLECTIONS



CLEAR BLUE WATER



PHEASANT FEATHERS - NOIR



PHEASANT FEATHERS



DRY LAKE BED



BABY TEARS



GOOD LUCK



XERISCAPE



IVY WALL

COLLECTIONS



IN THE PINK



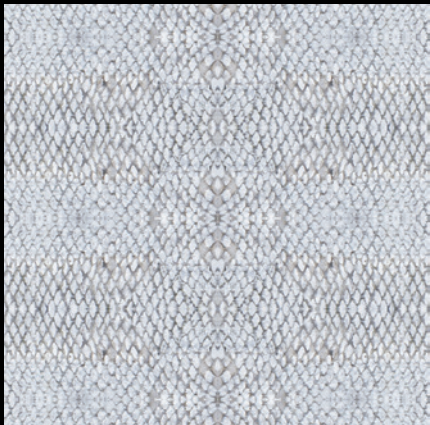
SILVERSWORD



OPTIC STEEL



OPTIC SPECTRUM



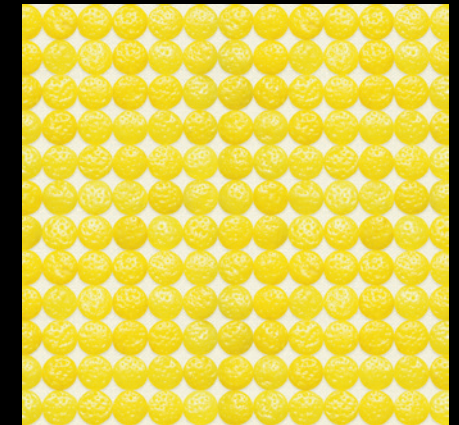
SALMON SKIN



ANY OCCASION

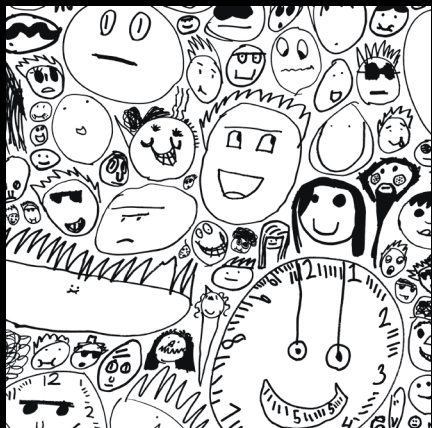


SAND BAR



LEMON DROPS

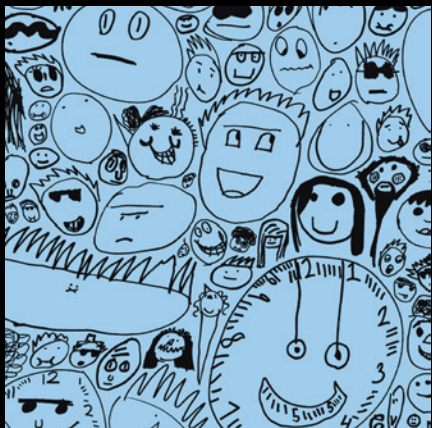
COLLECTIONS



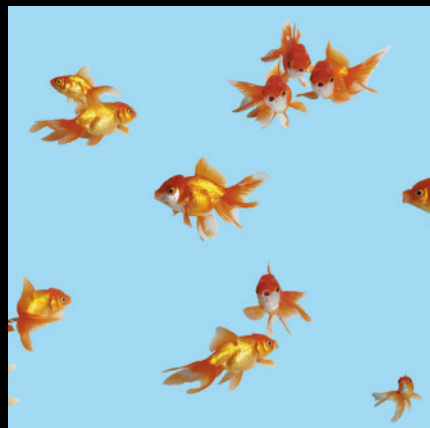
PEOPLE - AIR



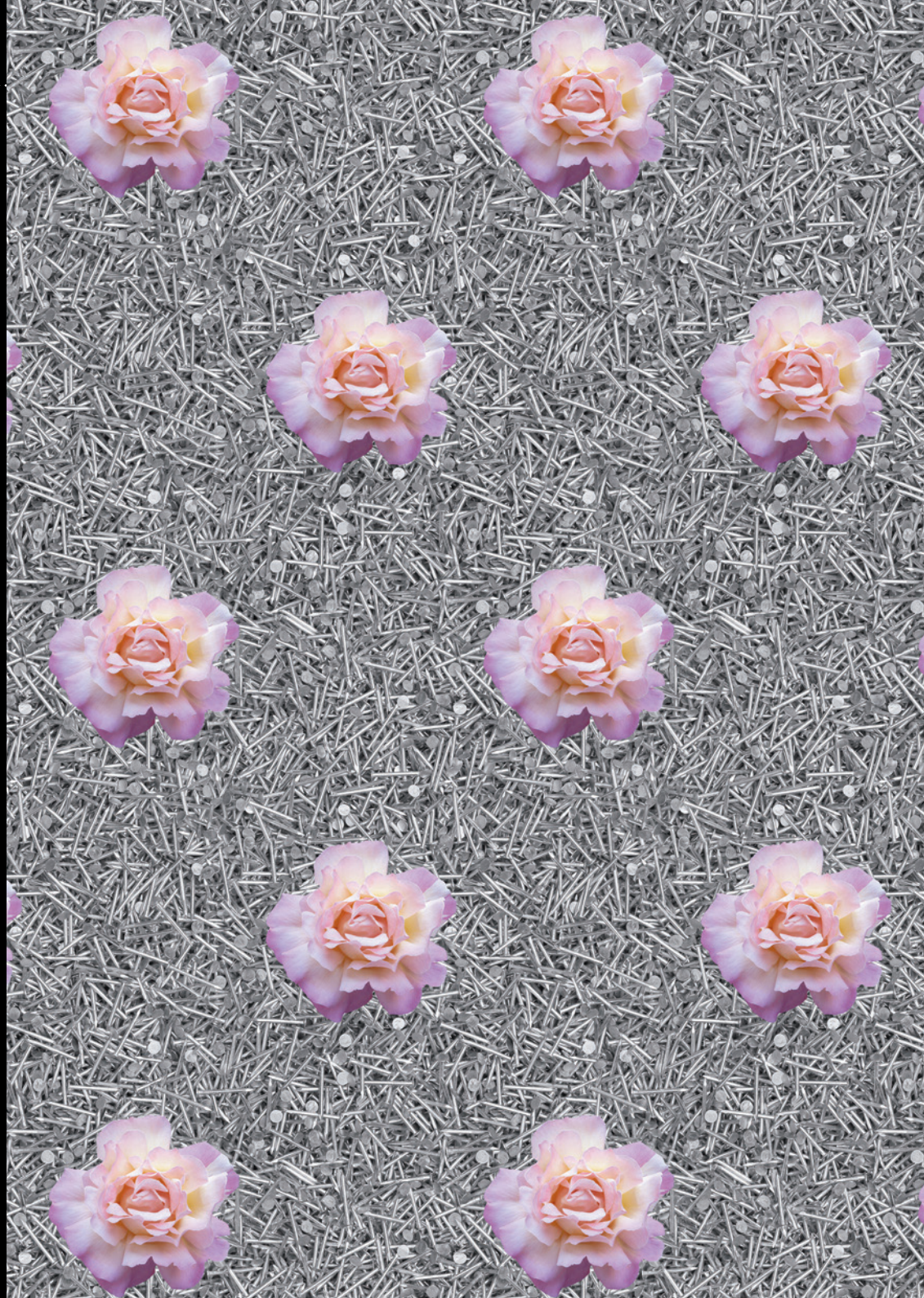
PEOPLE - LAND



PEOPLE -SEA



POOL PARTY



SIAM COLLECTION

THE SIAM COLLECTION CONSISTS OF SURFACE PATTERNS FOUND IN THE BUDDHIST TEMPLES OF BANGKOK. JOHN RINEK PHOTOGRAPHED IN THE GRAND PALACE, WAT PO, THE TEMPLE OF DAWN, AND OTHER TEMPLES THROUGHOUT THE CITY. THE COLLECTION IS CURRENTLY UNDER CONSTRUCTION WITH MANY NEW DESIGNS TO COME. PLEASE CHECK BACK SOON!



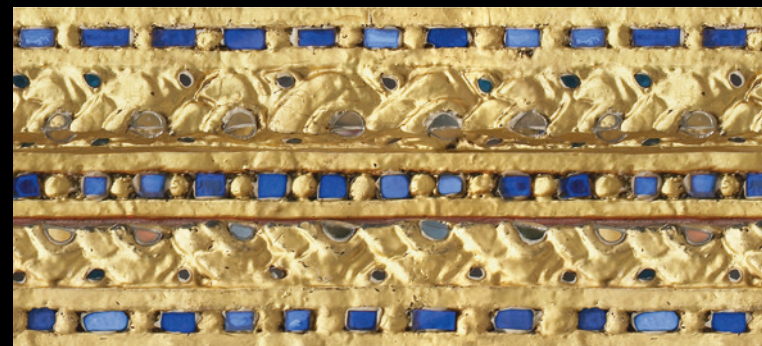
PORCELAIN GARDEN - FIELD



LUCKY PATH - FIELD



PORCELAIN GARDEN - BORDER



ROYAL SPLENDOR - BORDER



PORCELAIN GARDEN - BORDER

COLLECTIONS



ROYAL SLENDOR - FIELD



GOLDEN TEARDROPS



EMERALD BUDDHA



ROYAL PRIDE



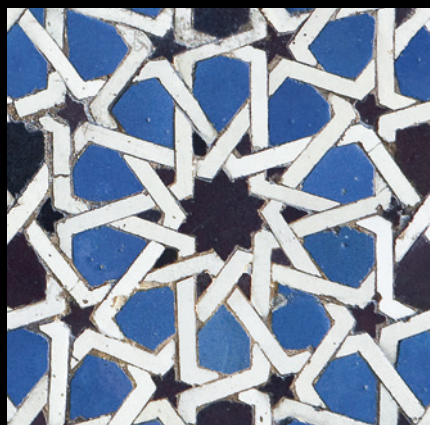
ANDALUCÍA COLLECTION

INSPIRED BY THE ELABORATE DESIGNS OF MOORISH ARCHITECTURE, THIS COLLECTION BRINGS THE AESTHETIC OF OLD WORLD SOUTHERN SPAIN INTO ANY SPACE. THE COLLECTION WAS CREATED FROM PHOTOGRAPHS OF SURFACES IN THE ALHAMBRA IN GRANADA, THE ALCÁZAR IN SEVILLA, AND THE MEZQUITA IN CÓRDOBA.

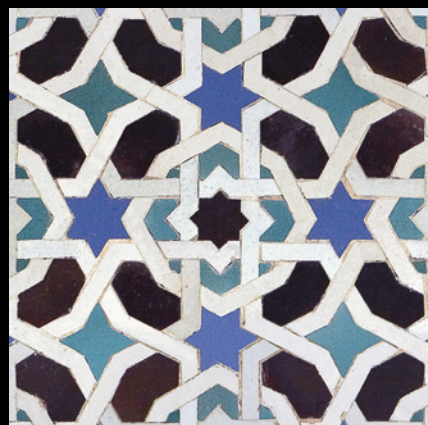
ON A HILL OVERLOOKING THE CITY OF GRANADA SITS THE ALHAMBRA. ITS RUGGED FORTRESS-LIKE EXTERIOR IS IN STARK CONTRAST TO THE WONDER HELD WITHIN. MARVELOUSLY INTRICATE CERAMIC TILE AND MARBLE CARVINGS COVER THE INTERIOR AND COURTYARD

WALLS, ARCHES, AND COLUMNS OF THE PALACE. EACH PATIO, ROOM, AND HALLWAY OFFERS ANOTHER INCREDIBLE FEAT OF DESIGN TO CONTEMPLATE. THE DISTRESSED CONDITION OF THE SURFACES, WEATHERED BY CENTURIES OF TIME, ADDS A TANGIBLE ASPECT TO AN OTHERWISE SURREAL EXPERIENCE. SIMILARLY, THE ALCÁZAR IN SEVILLA DISPLAYS MASTERFULLY ENGINEERED CERAMIC TILE DESIGNS, ORNATELY DECORATING THE PALACE FROM THE COURTYARDS TO THE INTERIOR ROOMS. THE CLASSIC DESIGNS IN BOTH PALACES REPEAT INDEFINITELY, TRANSLATING PERFECTLY INTO SURFACE DESIGNS.

IN CÓRDOBA, THE MEZQUITA WAS FIRST BUILT AS A CHURCH ON THE SITE OF A ROMAN TEMPLE, LATER CONVERTED INTO A MOSQUE, AND THEN TURNED BACK INTO A CHURCH. IT HAS SERVED AS A PLACE OF WORSHIP FOR MILLENNIA. MASSIVE, SPIKED, COPPER DOORS, SPACED ALONG ITS WALLS, BEAUTIFULLY PROTECT THE SACRED EDIFICE. ALTHOUGH COUNTLESS MILLIONS HAVE WALKED THROUGH THE DOORS INTO THE COURTYARD IT REMAINS A SINGULAR EXPERIENCE. GREENISH-GOLD WINDOWS FRAMED IN CARVED WOOD FACE THE COURTYARD GARDEN. THE WINDOWS DECORATIVELY FILL THE SPACE UNDERNEATH STRUCTURAL ARCHES WHILE THEY ALLOW GLOWING LIGHT TO ILLUMINATE THE FOREST OF COLUMNS WITHIN THE BUILDING. ADAPTING THE PATTERN OF THESE ARCHITECTURAL DESIGNS INTO SURFACE DESIGNS CREATES A UNIQUE DYNAMIC.



SEVILLA MIDNIGHT



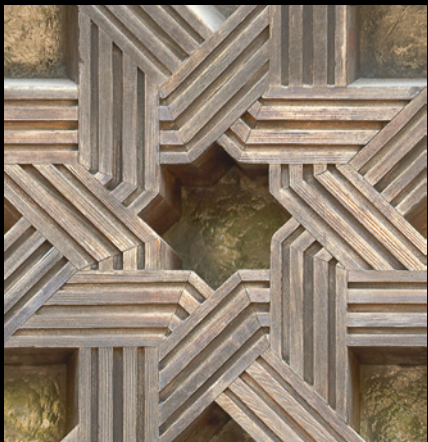
SEVILLA COMPASS



MOORISH MOSAIC



GRANADA CROWN JEWEL



CORDOBA CROSSROADS



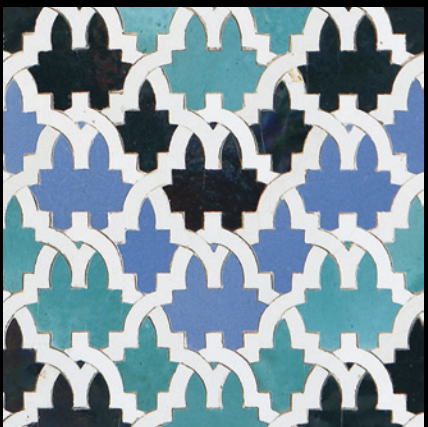
GRANADA SPARROW



MOORISH METRO



MOORISH MARBLE



ALHAMBRA BATH HOUSE



ALCAZAR PIANO



ALCAZAR KALEIDOSCOPE



ALHAMBRA JESTER

COLLECTIONS



CORDOBA DRAWBRIDGE



GRANADA GRID



ALCAZAR CHECKERS



EXAMPLE APPLICATIONS



BARBED WIRE - COAL



BARBED WIRE - CHROME



NAILS RED STRIPE



BARBED WIRE HALF & HALF



RED FEATHER ROSES RETRO



DRY LAKE BED RETRO



MARIPOSA PRECIOSA - WHITE



XERISCAPE



CHAMP DE MARS

RINEKWALL IN THE PRESS

RIVIERA MAGAZINE

RINEKWALL WAS FEATURED IN RIVIERA MAGAZINE'S JANUARY 2012 ISSUE. THE FEATURE RECOGNIZED CO-FOUNDER DANA AGAMALIAN FOR HER SUCCESS IN THE WORLD OF INTERIOR DESIGN.



ARCHITECTURAL DIGEST

SEVERAL RINEKWALL DESIGNS WERE
FEATURED IN THE "DISCOVERIES BY
DESIGNERS" SECTION OF THE AUGUST
2010 ISSUE OF ARCHITECTURAL DIGEST.

Discoveries by Designers For more shopping, log on to ArchitecturalDigest.com

Rinekwall
Architecture, nature and even the contents of a tool drawer have provided the images found on Rinekwall's photographic wallcoverings, available through Designart, all of which were born of a collaboration between a designer and a photographer. As with the rest of the Andalusia Collection, Sevilla Compass takes its inspiration from the Moorish architecture of Spain. Ruby Tears and Mariposa Preciosa, both from the ever-expanding Designer Collection, represent the great outdoors.

Queenly Figure
Dallas dealer Joel Cooner (www.joelcooner.com; 214-247-3603) has a processional statue of Queen Isabella of Castile. The elegantly attired figure, \$28,500, from the late 17th or early 18th century, stands three feet tall.

Dharma Gem
Dharma Art (www.dharmaartpalkey.com; 310-410-9589) in Santa Monica, California, has an 18th-century Tibetan jar, or offering chow, \$4,500, part of an inventory focused on the region.

Table Mates
The Canoska Collection from Roche Bobois (www.rochebobois.com; 800-717-2747), designed by Jérome Gunther, includes a leather-wrapped dining table, from \$7,975, and an armchair, from \$1,855.

Bottle Service
At Howard Noes Ancient Art (www.howardnoes.com; 212-473-5171) in Manhattan is a well-preserved pair of mid-second-century Roman glass unguentaria, \$3,200, that date from the first to the third century.

continued on page 36

www.ArchitecturalDigest.com | 35

ARCHITECTURAL DIGEST

THE INTERNATIONAL MAGAZINE OF DESIGN

AUGUST 2010

Exotic Homes

Bali, Acapulco, Bahamas, Athens, India, Singapore, Israel, Kenya, Istanbul, Private Jet & Auction Preview, Chatsworth



PLUS: Estates for Sale



www.ArchitecturalDigest.com

TRADITIONAL HOME

RINEKWALL'S "MALACHITE" DESIGN WAS FEATURED IN THE APRIL 2013 ISSUE OF TRADITIONAL HOME MAGAZINE.



Stone Storage
This "Andu" box in malachite by Rab Glass is an attractive way to organize, from \$385. (rincwall.com)

Winter Palace
Saint Petersburg, Russia
Columns, mantelpieces, and vases in malachite mosaics decorate the Winter Palace's aptly named Malachite Room, which is part of Russia's State Hermitage Museum. Designed by Alexander Briullov in the late 1830s, the dramatic space

"Malachite" wall covering
rincwall.com

Gem and Stone: Jewels of Earth, Sea, and Sky, \$25, by Jennifer Altman (chroniclebooks.com)

For a great look, pair a basic black dress with this azurite-and-malachite teardrop necklace with bronze pearls and chrysocolla, \$900 for necklace, bracelet, and earring set from Eye

COLLECTOR'S EYE: WHAT TO BRING HOME FROM YOUR TRAVELS p50

TRADITIONAL HOME

April 2013

Passion for Collecting

beautifully display your treasures

Plus,
SET A PRETTY TABLE YOUR GUESTS WILL REMEMBER p71

DYNAMIC COLOR DUO:
EMERALD & KELLY GREEN

SOUTHERN CHARM:
CHARLESTON GARDEN p124

\$4.95 U.S. Display until April 16



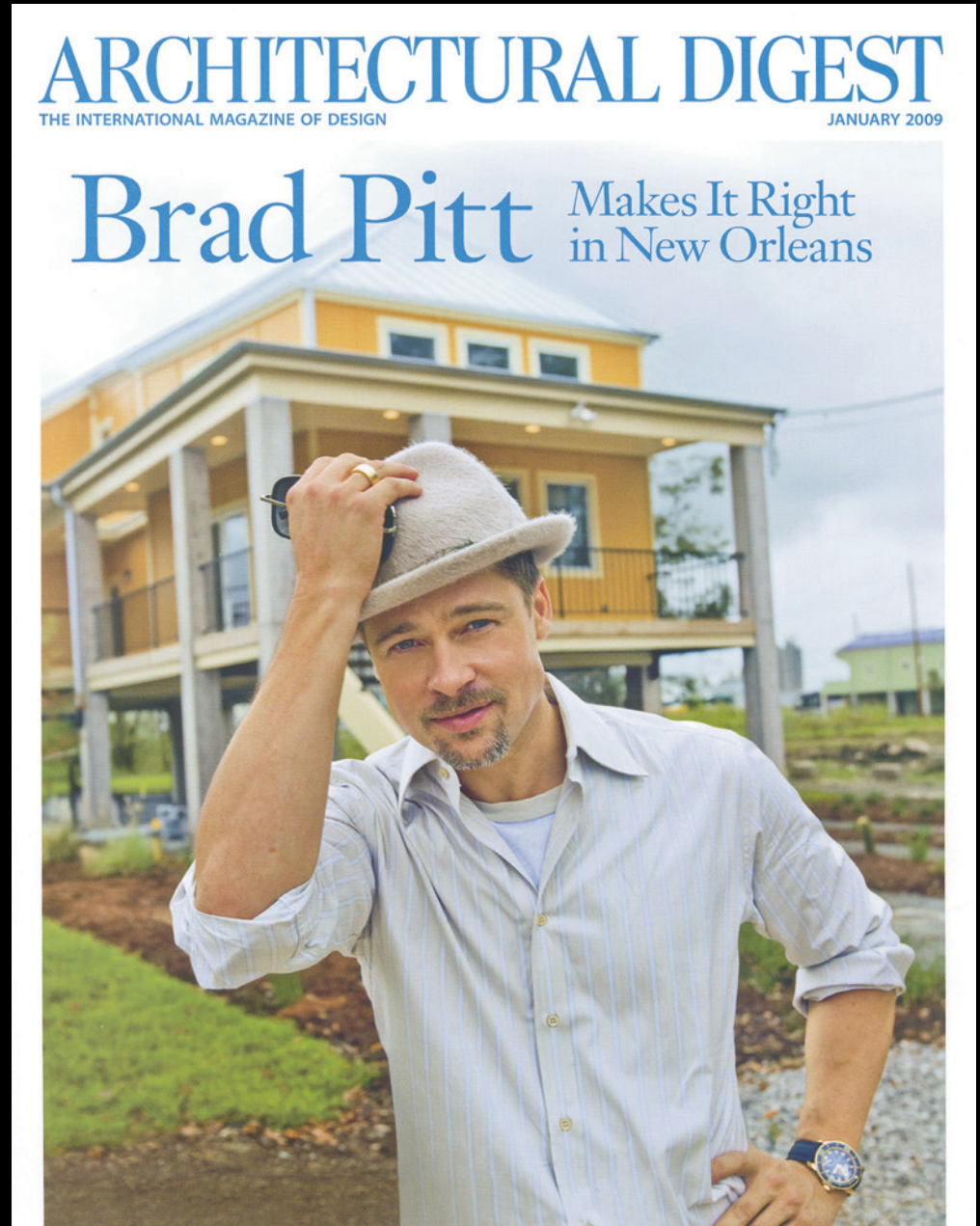
MODERN IN DENVER

RINEKWALL'S "PEOPLE" DESIGN WAS
FEATURED IN THE FALL 2012 ISSUE OF
MODERN IN DENVER.



ARCHITECTURAL DIGEST

SEVERAL RINEKWALL DESIGNS WERE
FEATURED IN THE JANUARY 2009 ISSUE
OF ARCHITECTURAL DIGEST.



ARCHITECTURAL PRODUCTS

RINEKWALL'S "WIRED" AND "MOORISH METRO" DESIGNS WERE FEATURED IN THE SEPTEMBER 2009 ISSUE OF ARCHITECTURAL PRODUCTS.



RIVIERA INTERIORS

RINEKWALL WAS FEATURED IN A FULL EDITORIAL IN THE SUMMER 2008 ISSUE OF RIVIERA INTERIORS. THE EDITORIAL GOES INTO GREAT DEPTH BEHIND THE RINEKWALL CREATIVE PROCESS AND INSPIRATION.



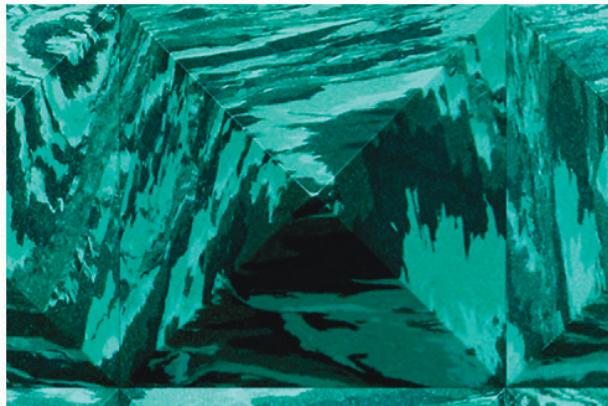
CLAUDIA OWEN

RINEKWALL DESIGNS ARE REGULARLY
FEATURED ON INTERIOR DECOR
BLOGGER CLAUDIA OWEN'S WEBSITE.

Rinekwall

October 14, 2010 in Wallpaper | Tags: Malachite wallpaper, Mariposa preciosa white wallpaper, Mariposas amarillas wallpaper, Mini bar amber wallpaper, Moorish marble wallpaper, Peacock dream wallpaper, Photographic wallpapers, Red feather roses wallpaper, Rinekwall, Salmon skin wallpaper, Sand bar wallpaper, Wallpapers | 3 comments

In the past I don't think I ever really liked the idea of photographic wallpapers until today... I've just come across Rinekwall and they have a wonderful collection of photographic wallpapers that has made me change my mind about them. I'm really amazed by how great they actually look on your walls, and how many of them create a wonderful effect depending on your distance from it.



CLAUDIA OWEN

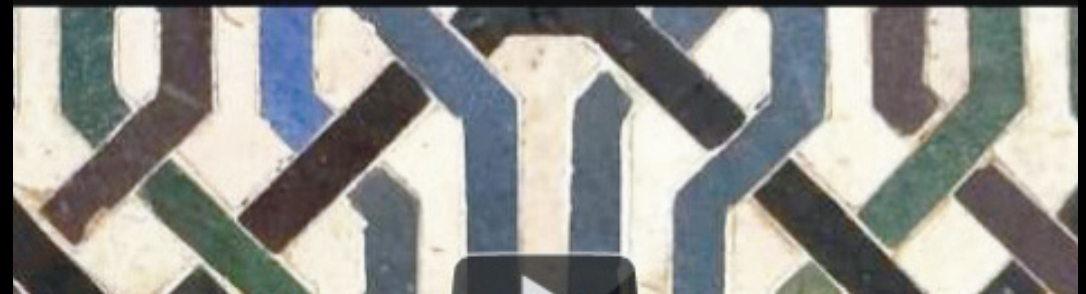
Design photography Art People

[Home](#) [About me](#) [Categories](#) [Submissions](#) [Contact me](#)

Dana Agamalian and John Rinek

October 15, 2010 in Wallpaper | Tags: Dana Agamalian, John Rinek, Photographic wallpapers, Rinekwall, Wallpapers | [Leave a comment](#)

If you don't know who Dana Agamalian and John Rinek are, you might know some of their work. They are the designers behind Rinekwall and since yesterday I showed you some of their [photographic wallpaper designs](#), today I wanted to find out a little more about their background. This video will give you a little insight on their background and inspiration for their work.



NOTABLE CLIENTELE



Bristol-Myers Squibb

CREDIT SUISSE



SHERWIN-WILLIAMS®

STANDARD
& POOR'S

ANN GETTY
& ASSOCIATES

CINEMARK®

AstraZeneca



Google

NBC



UNIVERSAL

Marriott®

Gensler

R
RENAISSANCE®
HOTELS



TARGETED LICENSE CATEGORIES

FABRICS

- APPAREL
- UMBRELLAS

ACCESSORIES

- HATS
- BAGS
- CANVAS SHOES
- SANDALS
- TIES, BOW TIES/
POCKET SQUARES
- SCARVES

ELECTRONIC DEVICES

- PROTECTION
- ACCESSORIES
- STRAPS

SKATEBOARD/ SNOWBOARD/SKI

LUGGAGE/BACKPACK

PET ACCESSORIES

STATIONARY

OFFICE/SCHOOL

- DESKTOP ACCESSORIES
- TRASH CANS
- FOLDERS/NOTEBOOKS

BEACH/OUTDOOR

- TOWELS
- UMBRELLAS
- AWNINGS
- CHAIRS

PICNIC SUPPLIES

- PLACE SETTINGS
- NAPKINS
- TABLE CLOTHS

CHILDREN

- CAR SEATS/STROLLERS
- BEDDING
- FURNITURE
- TOYS

BED AND BATH

- BEDDINGS
- ROBES
- SHOWER CURTAINS

KITCHEN

- BOWLS/TRAYS/UTENSILS
- APRONS
- OVEN MITTS/PADS
- CHOPPING BLOCKS/
TRIVETS
- CERAMIC/PORCELAIN

VEHICLE WRAPS

HELMETS

GIFT WRAP/PACKAGING

RINEKWALL

UNIVERSAL APPLICATIONS

INFO@RINEKWALL.COM

PHONE: +1.949.887.4882

WWW.RINEKWALL.COM

RINEKWALL 1980 PLACENTIA AVENUE, SUITE F, COSTA MESA, CA 92627 USA

COPYRIGHT © 2014 RINEKWALL ALL RIGHTS RESERVED